

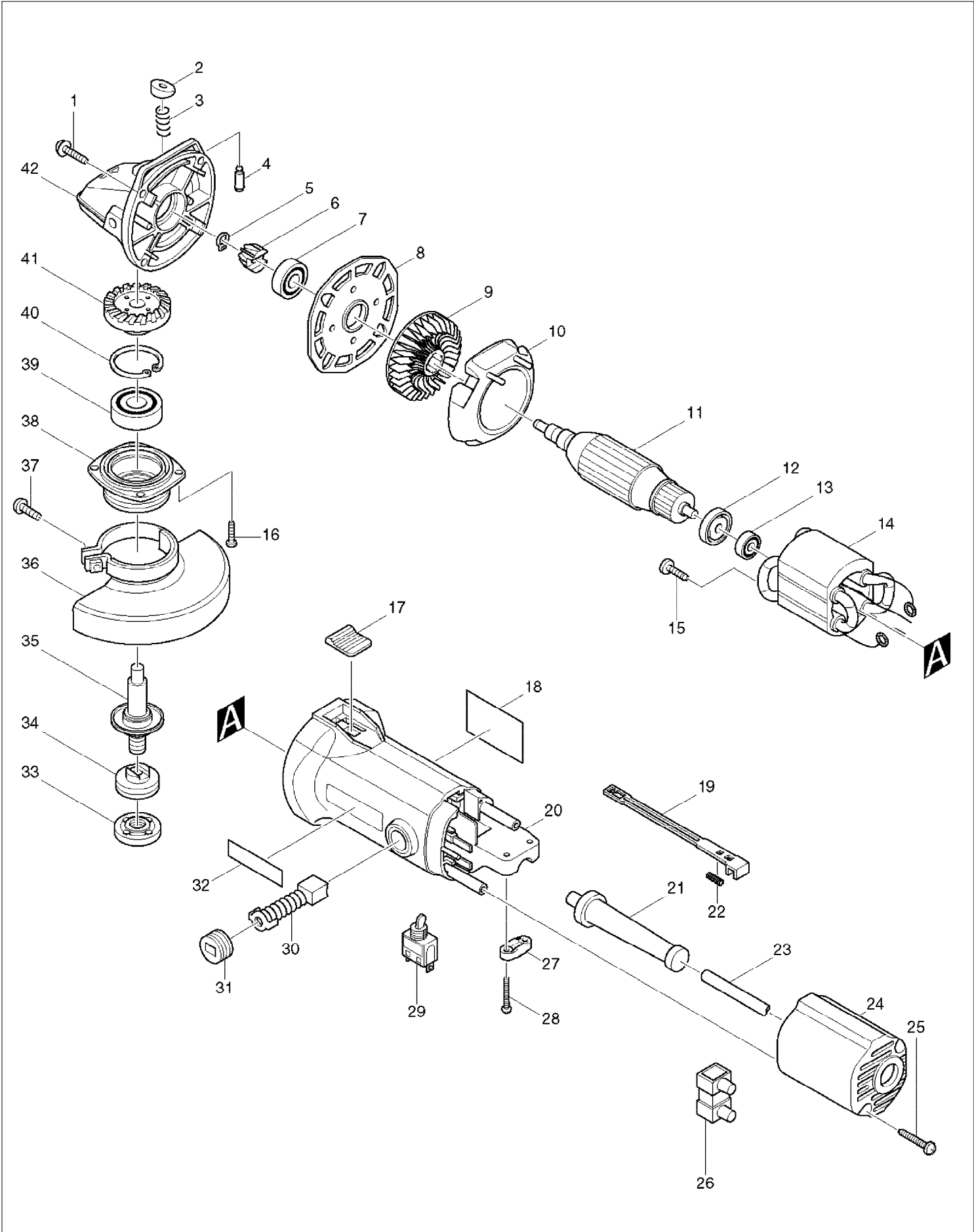
SPARE PARTS LIST

MODEL NO. 9523NB

ITEM	PART NO.	DESCRIPTION	QTY	NOTE
001	266041-8	TAPPING SCREW 5X25	4	
002	415491-6	PIN CAP 9020NB/9522NB/9526NB	1	
003	233072-2	COMPRESSION SPRING 8	1	
004	256437-1	PIN 4 9520NB/9522NB/9526PB	1	
005	961002-0	RETAINING RING S-6	1	
006	*****	*****	***	*****
007	211062-5	BALL BEARING 6000ZZCM/2A 1901/	1	
008	285684-7	BEARING RETAINER 52 9523NB & 9	1	
009	241890-4	FAN 57 9523NB & 9524NB	1	
010	415954-2	BAFFLE PLATE 9523NB & 9524NB	1	
011	*****	*****	***	*****
012	681638-6	INSULATING WASHER 9523NB/24NB	1	
013	211012-0	BALL BEARING 606ZZ HR2410/2450	1	
014	*****	*****	***	*****
015	266007-8	TAPPING SCREW BIND PT 3X10	2	
016	266034-5	TAPPING SCREW CT 4X16	4	
017	415952-6	SWITCH KNOB 9523/24/27/28NB	1	
018	851572-6	NAME PLATE 9523NB	1	
019	*****	*****	***	*****
020	159866-6	MOTOR HOUSING COMPLETE 9523NB	1	
021	682502-4	CORD GUARD 8-85 3707/N1923B	1	
022	*****	*****	***	*****
023	*****	*****	***	*****
024	415955-0	REAR COVER 9523/24/28NB	1	
025	265995-6	TAPPING SCREW 4X18	2	
026	654532-5	TERMINAL BLOCK 9920/BO4561/360	1	
027	*****	*****	***	*****
028	265995-6	TAPPING SCREW 4X18	2	
029	651403-7	SWITCH ST115A-31 3600B/9528NB	1	
030	191940-4	CARBON BRUSH CB-411	1	
031	643928-5	BRUSH HOLDER CAP 9523NB/3707/8	2	
032	819063-3	MAKITA LABEL 500 4305/HR160DW	1	
033	224559-5	LOCK NUT 10-30 9520NB/9553NB	1	
034	224314-5	INNER FLANGE 30 9520NB/9553NB	1	
035	152523-5	SPINDLE COMPLETE 9523/9524NB	1	
036	165187-6	WHEEL COVER 9520NB/9523NB	1	
037	251391-4	PAN HEAD SCREW M5X16	1	
038	316800-1	BEARING BOX 9523NB/24/28NB	1	
039	*****	*****	***	*****
040	962151-6	RETAINING RING R-32 8419B/2 95	1	
041	*****	*****	***	*****
042	159867-4	GEAR HOUSING COMP 9523NB/9524N	1	
A02	782401-1	LOCK NUT WRENCH 20 9501B	1	
E02	645200-1	NOISE SUPPRESSOR LS0714 only	1	
E06	654091-9	NON INSULATED TERMINAL LC1230	1	115V
E07	655030-2	PLUG UK TYPE 2107F/JR3050T	1	115V

SERVICE DRAWING

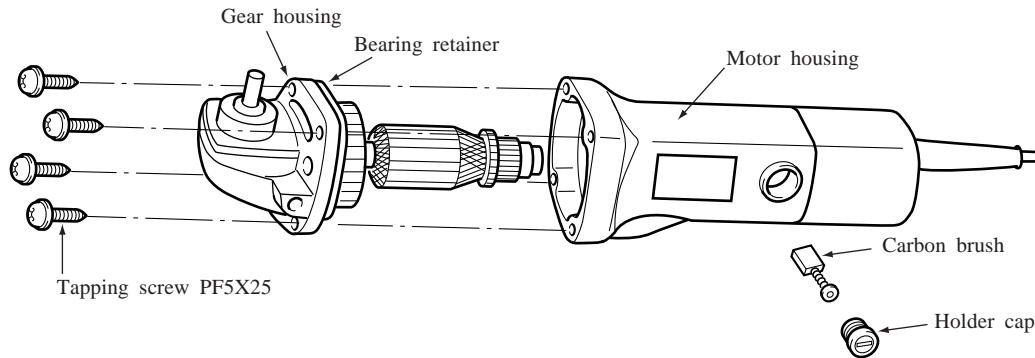
MODEL NO. 9523NB



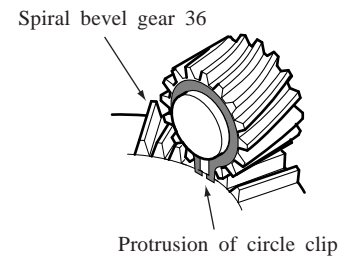
► Repair

(1) Replacing of armature

- 1) Disconnect the wheel and wheel cover, respectively.
- 2) Disconnect the carbon brush.
- 3) Disconnect the tapping screw PF5x25 for holding the gear housing and motor housing and then remove the armature.



- 4) To disassemble the armature from the gear housing, depending on the position its sometime hard to pull out the armature due to touching between the protrusion of circle clip and spiral bevel gear 36. In such a case slightly turn the armature to slide it before disassembling.



(2) Replacing of the spiral bevel gear 36

- 1) Disconnect the wheel and wheel cover, respectively.
- 2) Disconnect the tapping screw CT4x16 for holding the bearing box.
- 3) Since the spiral bevel gear is just inserted into the spindle, assemble/disassemble as shown on the below figure.

