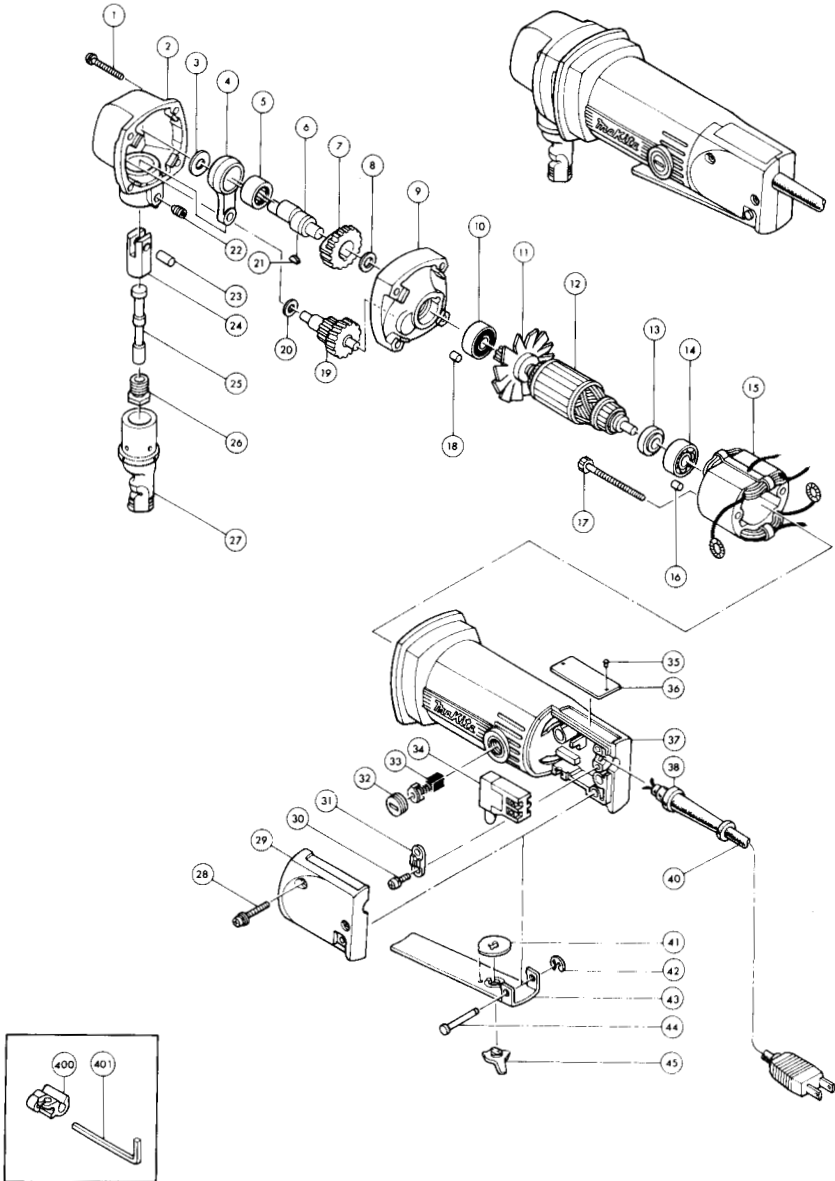




NIBBLER Model JN1600



ITEM NO.	NO. USED	DESCRIPTION	ITEM NO.	NO. USED	DESCRIPTION
<u>MACHINE</u>			<u>MACHINE</u>		
1	4	P. H. Screw M4x35 (With Washer)	25	1	Punch
2	1	Gear Housing (With Plane Bearing 6 & Needle Bearing 810)	26	1	Screw
3	1	F. Washer 8	27	1	Dice
4	1	Rod	28	2	P. H. Screw M4x30 (With Washer)
5	1	Needle Bearing 1412	29	1	Switch Cover
6	1	Crank Shaft	30	2	P. H. Screw M4x18 (With Washer)
7	1	Spur Gear 44	31	1	Strain Relief
8	1	F. Washer 8	32	2	Brush Holder Cap
9	1	Gear Housing Cover (With Needle Bearing 810 & Needle Bearing 609)	33	2	Carbon Brush CB-53
10	1	Ball Bearing 608LB	34	1	Switch
11	1	Fan 58	35	2	Rivet 0-5
12	1	ARMATURE ASSEMBLY (Assembled Items 10, 11, 12, 13 & 14)	36	1	Name Plate
13	1	Insulation Washer	37	1	Motor Housing (With Brush Holder x 2)
14	1	Ball Bearing 627LB	38	1	Cord Guard
15	1	FIELD ASSEMBLY (With Garter Spring x 2)	40	1	CORD ASSEMBLY (Assembled Cord, Plug & Cord Guard)
16	1	Rubber Pin 4	41	1	Leaf Spring
17	2	H. Bolt M4x55 (With Washer)	42	1	Stop Ring E-3
18	1	Rubber Pin 4			SWITCH LEVER ASSEMBLY (Assembled Items 41, 43 & 45)
19	1	Gear 23-37	43	1	Switch Lever
20	1	T. Washer 6	44	1	Pin 4
21	1	Woodruff Key 3	45	1	Safety Lock
22	1	S. Screw M6x10	<u>ACCESSORIES</u>		
23	1	Pin 6	400	1	Wrench Holder 3-7
24	1	Ram	401	1	H. Wrench 3